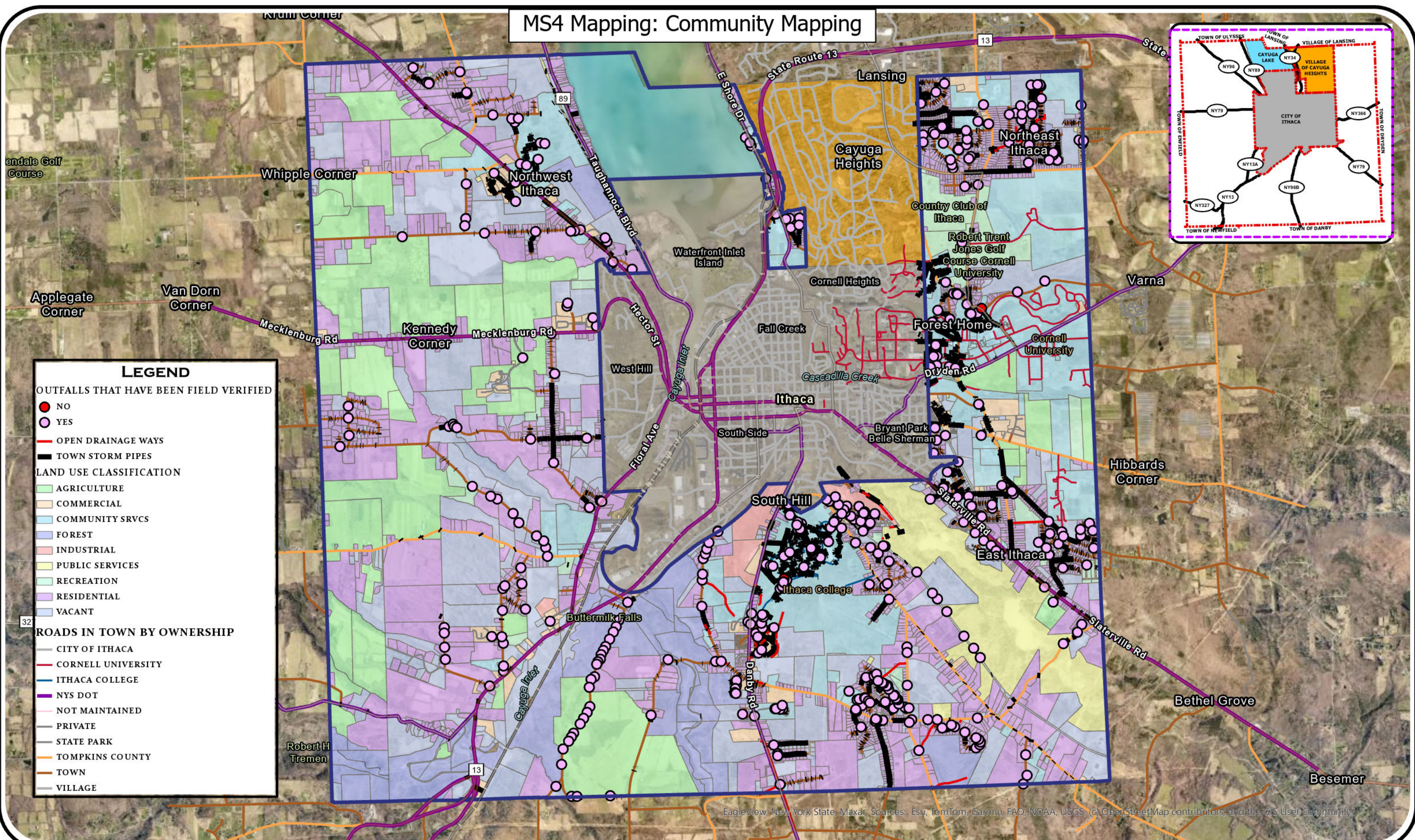
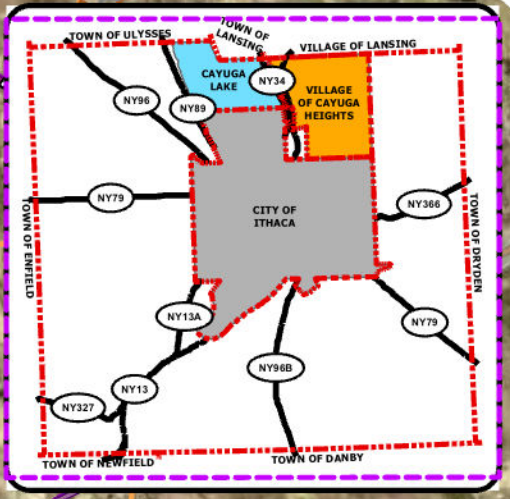


MS4 Mapping: Community Mapping



LEGEND

OUTFALLS THAT HAVE BEEN FIELD VERIFIED

- NO
- YES

OPEN DRAINAGE WAYS

- (Red line)

TOWN STORM PIPES

- (Black line)

LAND USE CLASSIFICATION

- AGRICULTURE (Green)
- COMMERCIAL (Orange)
- COMMUNITY SRVCS (Light Blue)
- FOREST (Dark Blue)
- INDUSTRIAL (Pink)
- PUBLIC SERVICES (Yellow)
- RECREATION (Light Green)
- RESIDENTIAL (Purple)
- VACANT (Light Purple)

ROADS IN TOWN BY OWNERSHIP

- CITY OF ITHACA (Grey)
- CORNELL UNIVERSITY (Red)
- ITHACA COLLEGE (Blue)
- NYS DOT (Purple)
- NOT MAINTAINED (Dashed Grey)
- PRIVATE (Thin Grey)
- STATE PARK (Dark Grey)
- TOMPKINS COUNTY (Orange)
- TOWN (Thick Grey)
- VILLAGE (Thin Grey)

MAP CREATED: 3/3/2025 10:01 AM
 BY: TOWN OF ITHACA ENGINEERING DEPT
 SOURCE: TOI ENGINEERING
 NYS GIS CLEARING HOUSE
 NYS DEC



DISCLAIMER:
 ALL LOCATIONS AND
 BOUNDARIES ARE APPROXIMATE.



EagleView, New York State, Maxar. Sources: Esri, TomTom, Garmin, FAO, NOAA, USGS, (c) OpenStreetMap contributors, and the GIS User Community