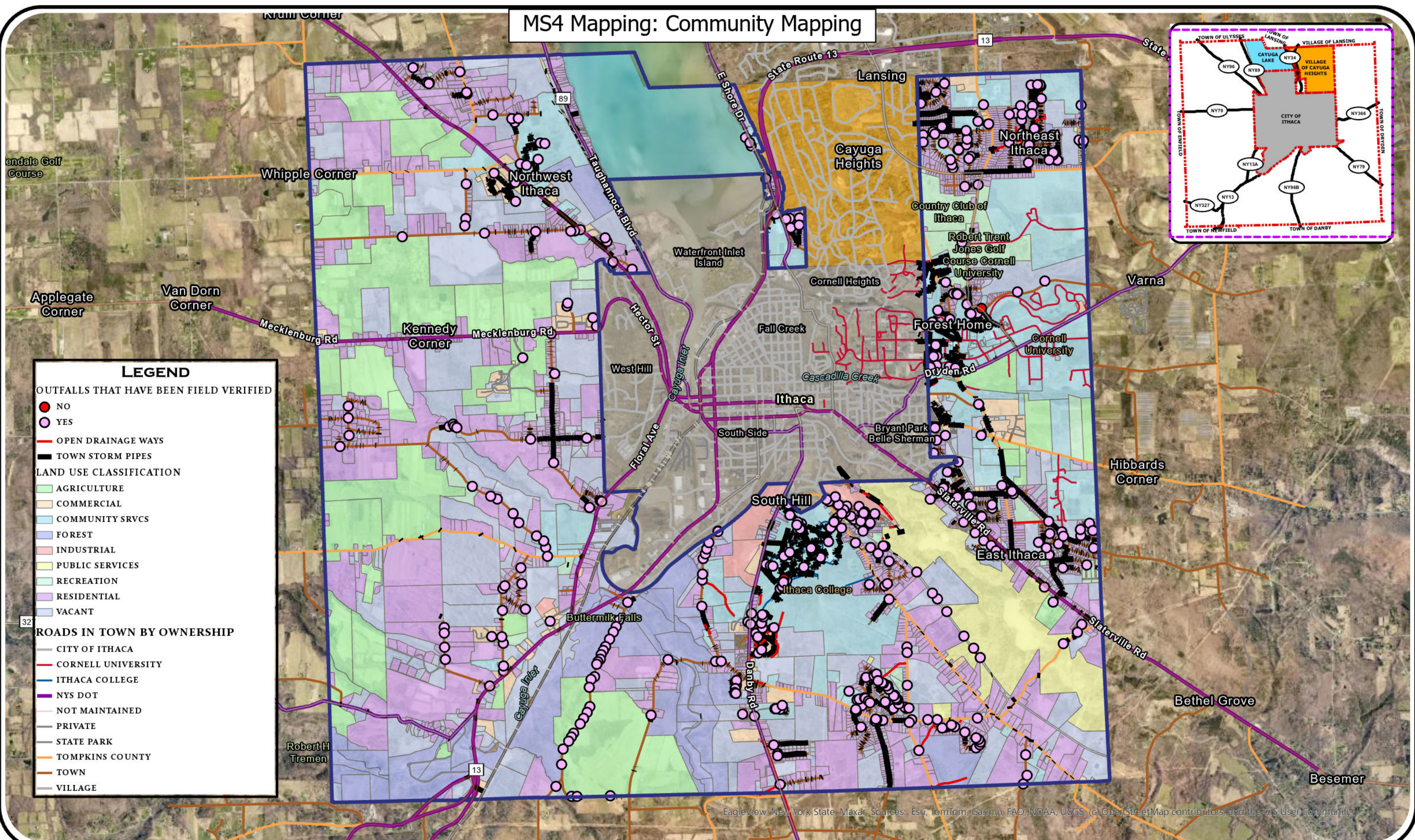
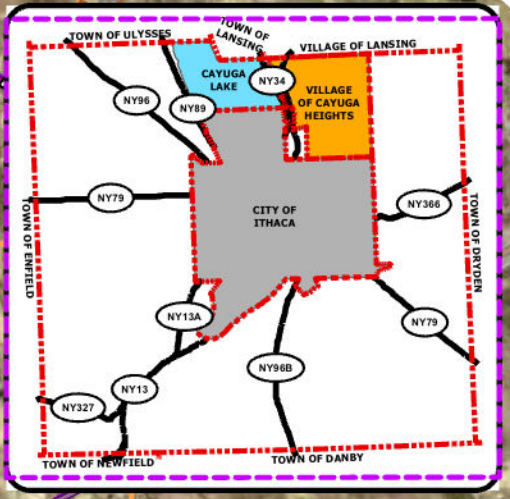


## Appendix D: Comprehensive System Mapping

# MS4 Mapping: Community Mapping



**LEGEND**

**OUTFALLS THAT HAVE BEEN FIELD VERIFIED**

- NO
- YES

**OPEN DRAINAGE WAYS**

- (Red line)

**TOWN STORM PIPES**

- (Black line)

**LAND USE CLASSIFICATION**

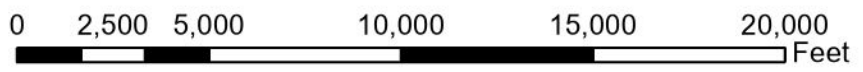
- AGRICULTURE (Green)
- COMMERCIAL (Orange)
- COMMUNITY SRVCS (Light Blue)
- FOREST (Dark Blue)
- INDUSTRIAL (Pink)
- PUBLIC SERVICES (Yellow)
- RECREATION (Light Green)
- RESIDENTIAL (Purple)
- VACANT (Light Purple)

**ROADS IN TOWN BY OWNERSHIP**

- CITY OF ITHACA (Grey)
- CORNELL UNIVERSITY (Red)
- ITHACA COLLEGE (Blue)
- NYS DOT (Purple)
- NOT MAINTAINED (Dashed Grey)
- PRIVATE (Thin Grey)
- STATE PARK (Dark Grey)
- TOMPKINS COUNTY (Orange)
- TOWN (Brown)
- VILLAGE (Thin Grey)

EagleView, New York State, Maxar. Sources: Esri, TomTom, Garmin, FAO, NOAA, USGS, (c) OpenStreetMap contributors, and the GIS User Community

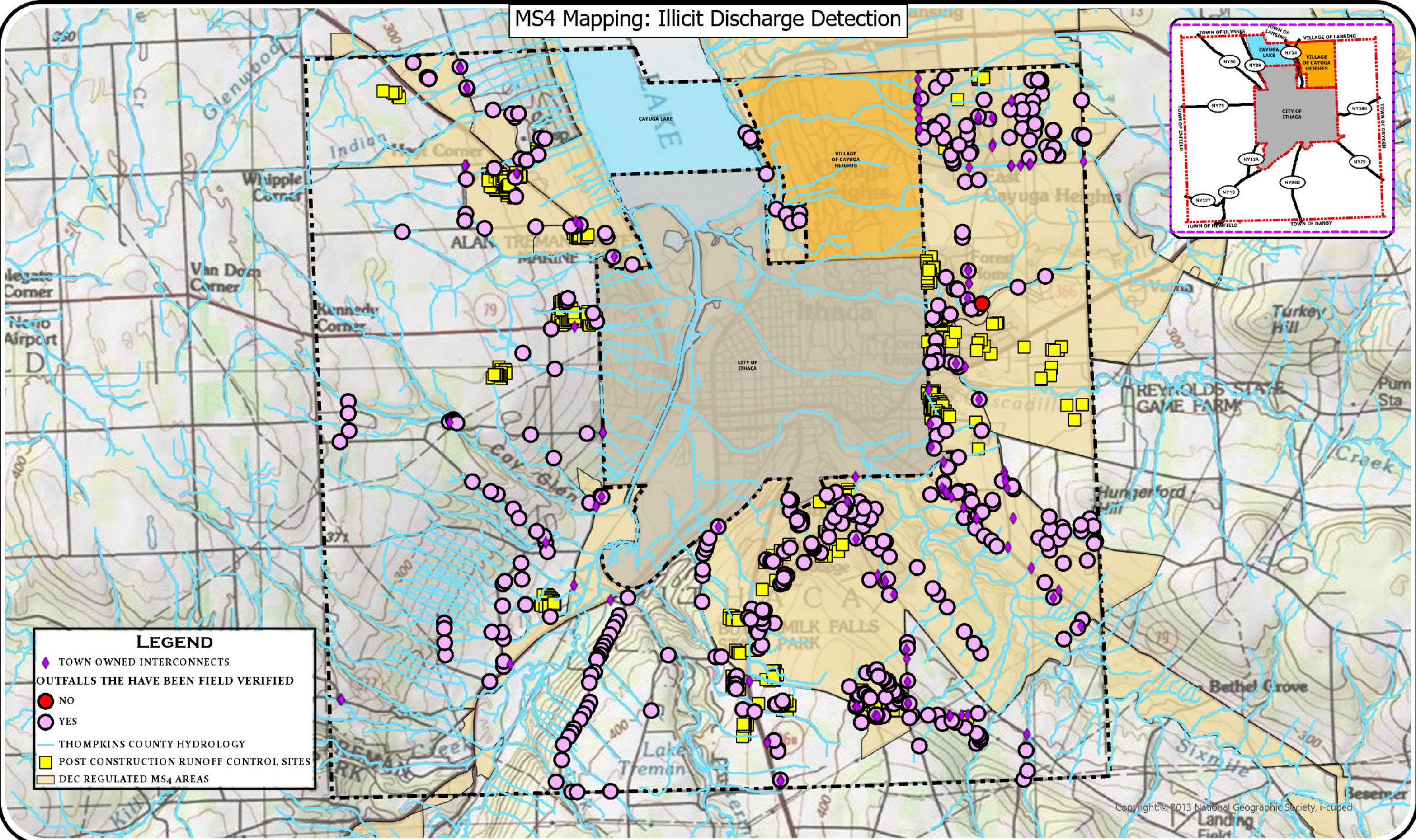
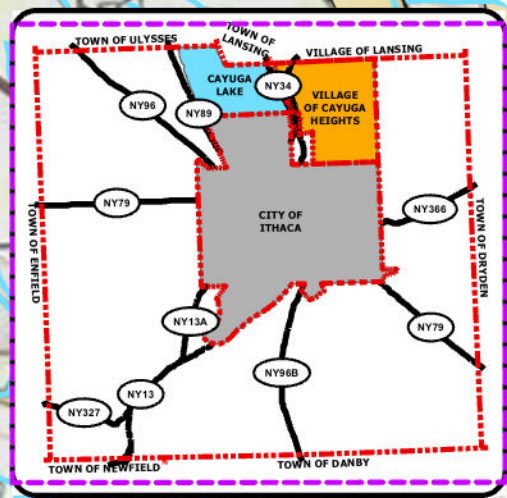
MAP CREATED: 3/3/2025 10:01 AM  
 BY: TOWN OF ITHACA ENGINEERING DEPT  
 SOURCE: TOI ENGINEERING  
 NYS GIS CLEARING HOUSE  
 NYS DEC



**DISCLAIMER:**  
 ALL LOCATIONS AND  
 BOUNDARIES ARE APPROXIMATE.



# MS4 Mapping: Illicit Discharge Detection



**LEGEND**

- ◆ TOWN OWNED INTERCONNECTS
- OUTFALLS THE HAVE BEEN FIELD VERIFIED
  - NO
  - YES
- THOMPKINS COUNTY HYDROLOGY
- POST CONSTRUCTION RUNOFF CONTROL SITES
- DEC REGULATED MS4 AREAS

Copyright © 2013 National Geographic Society, i-cubed

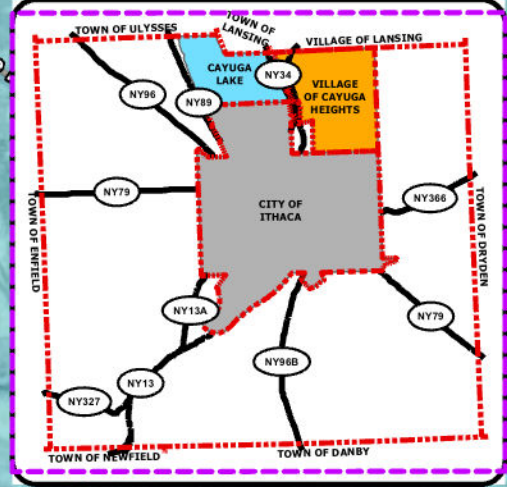
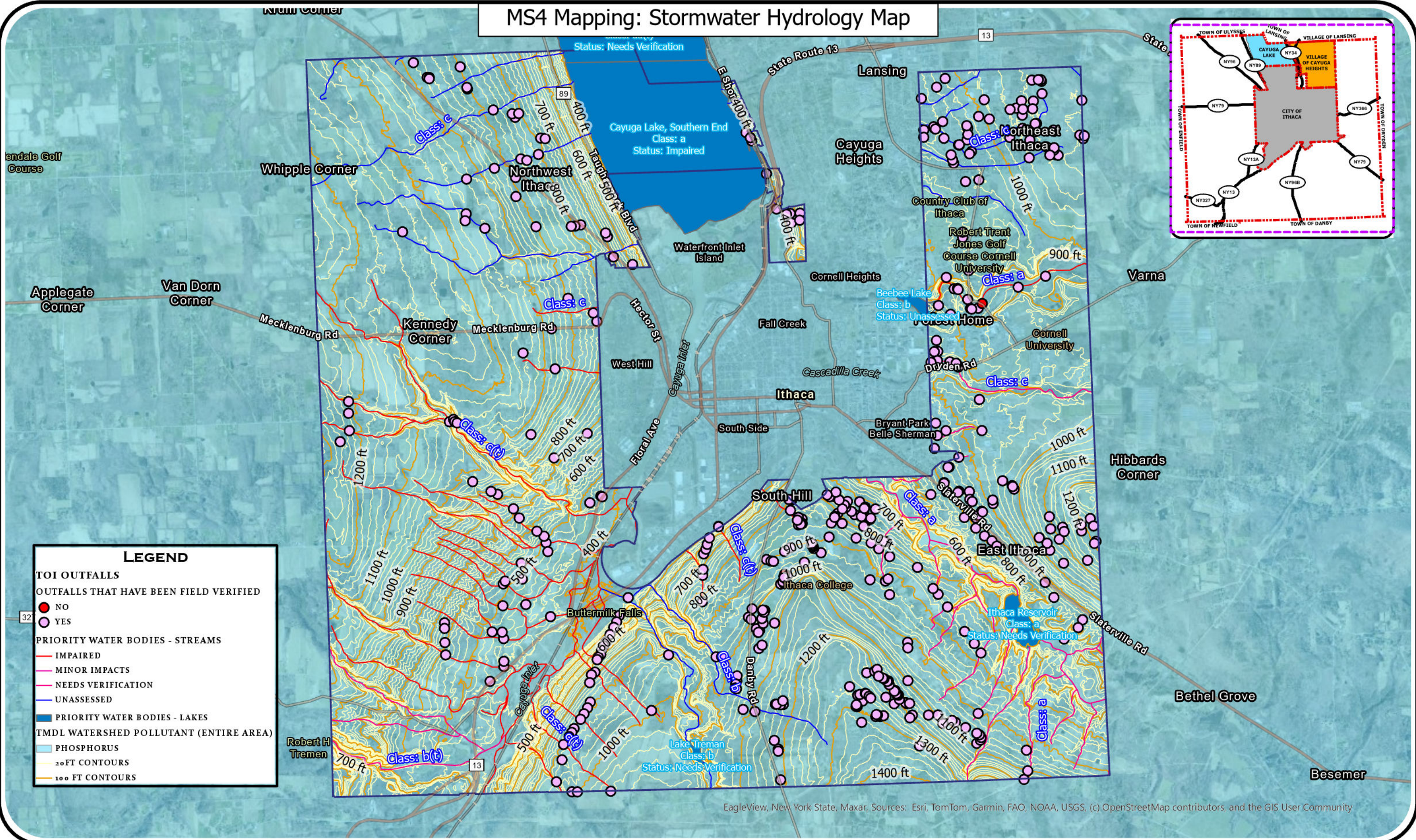
MAP CREATED: 3/3/2025 10:00 AM  
 BY: TOWN OF ITHACA ENGINEERING DEPT  
 SOURCE: TOI ENGINEERING  
 NYS GIS CLEARING HOUSE  
 NYS DEC



**DISCLAIMER:**  
 ALL LOCATIONS AND  
 BOUNDARIES ARE APPROXIMATE.



# MS4 Mapping: Stormwater Hydrology Map



**LEGEND**

**TOI OUTFALLS**  
 OUTFALLS THAT HAVE BEEN FIELD VERIFIED  
 ● NO  
 ● YES

**PRIORITY WATER BODIES - STREAMS**  
 — IMPAIRED  
 — MINOR IMPACTS  
 — NEEDS VERIFICATION  
 — UNASSESSED

**PRIORITY WATER BODIES - LAKES**

**TMDL WATERSHED POLLUTANT (ENTIRE AREA)**  
 PHOSPHORUS  
 20 FT CONTOURS  
 100 FT CONTOURS

EagleView, New York State, Maxar, Sources: Esri, TomTom, Garmin, FAO, NOAA, USGS, (c) OpenStreetMap contributors, and the GIS User Community

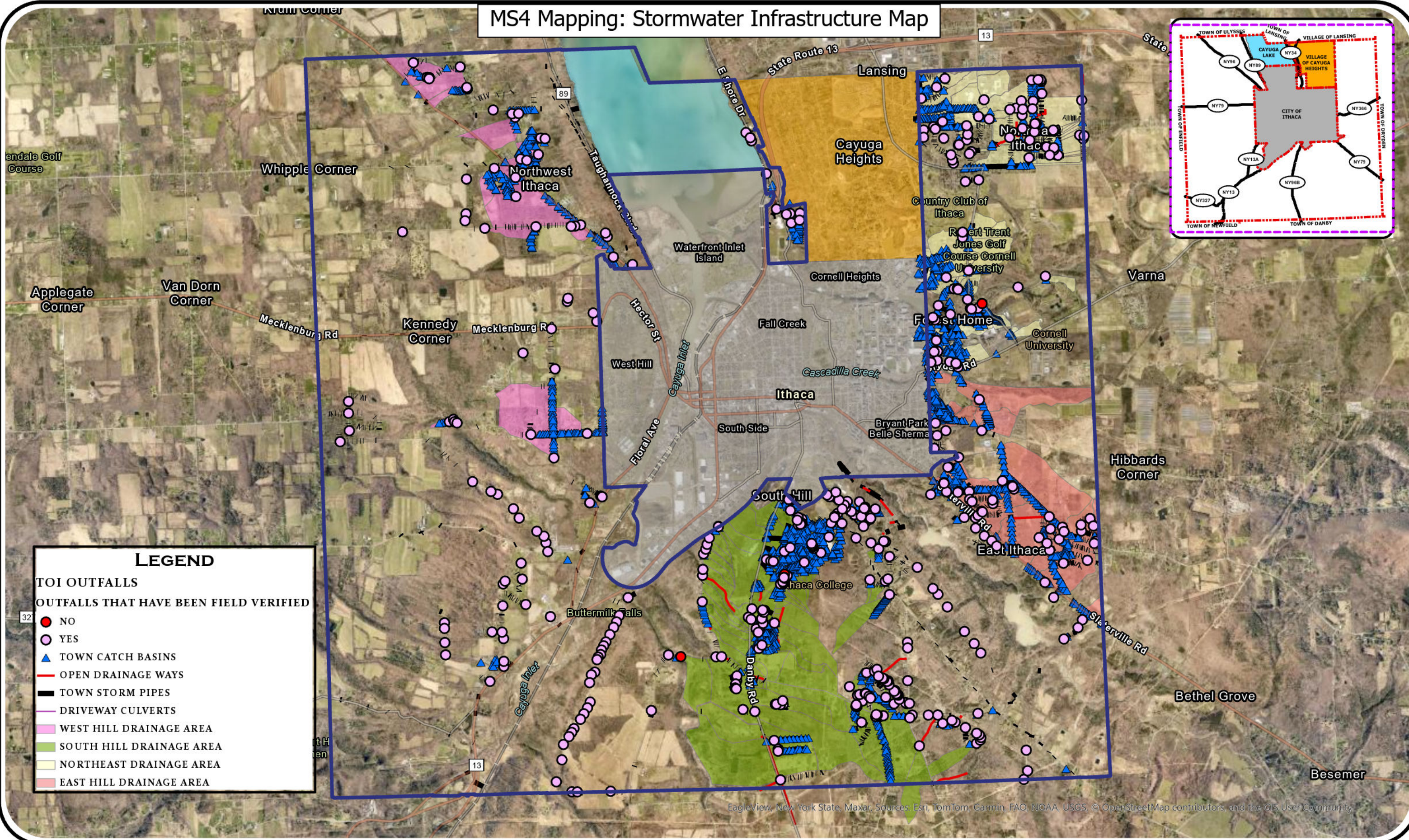
MAP CREATED: 3/3/2025 10:02 AM  
 BY: TOWN OF ITHACA ENGINEERING DEPT  
 SOURCE: TOI ENGINEERING  
 NYS GIS CLEARING HOUSE  
 NYS DEC



**DISCLAIMER:**  
 ALL LOCATIONS AND  
 BOUNDARIES ARE APPROXIMATE.



# MS4 Mapping: Stormwater Infrastructure Map



## LEGEND

- TOI OUTFALLS**
- OUTFALLS THAT HAVE BEEN FIELD VERIFIED**
- NO
  - YES
  - ▲ TOWN CATCH BASINS
  - OPEN DRAINAGE WAYS
  - TOWN STORM PIPES
  - DRIVEWAY CULVERTS
  - WEST HILL DRAINAGE AREA
  - SOUTH HILL DRAINAGE AREA
  - NORTHEAST DRAINAGE AREA
  - EAST HILL DRAINAGE AREA

EagleView, New York State, Maxar, Sources: Esri, TomTom, Garmin, FAO, NOAA, USGS, © OpenStreetMap contributors, and the GIS User Community

MAP CREATED: 3/3/2025 10:01 AM  
 BY: TOWN OF ITHACA ENGINEERING DEPT  
 SOURCE: TOI ENGINEERING  
 NYS GIS CLEARING HOUSE  
 NYS DEC



**DISCLAIMER:**  
 ALL LOCATIONS AND  
 BOUNDARIES ARE APPROXIMATE.

