

## Tour the Town's Top Ten Views

You can start this tour anywhere; we'll begin at View Way 1 on the map. The best views can be seen not just from the numbered view points, but from the scenic view ways near those points marked by red lines. Travel safely!

**1 Taughannock Blvd.** Heading north from the City line on Cayuga Lake's Scenic Byway, Rte 89, you can see many small gorges descending from a Town conservation zone on the left. The first gorge, Williams Glen, is the largest. Indian Creek, just south of the Town's border with Ulysses, also merits a name. All these gorges flow through culverts under the Black Diamond Trail where the Lehigh Valley RR used to run.

**2 Trumansburg Road.** Loop around Glenwood Heights Rd and Duboise Rd and return to Ithaca south on Rte 96. Just past the hospital and Museum of the Earth, look left for a fine view of East Hill and Cornell across Cayuga Lake valley.

**3 Mecklenburg Road.** Turn right up Bundy Rd, then right again on Hopkins Rd, left on Hayts Rd up to Sheffield Rd where huge long views eastward are visible between various woods. Then turn left on Rte 79, Mecklenburg Rd, and head east for views of a steep descent to the lake as farm fields give way to city sights. There's a great view of East Hill with the Dryden hills beyond at the bus stop near Rachel Carson Way on the right.

**4 Westhaven Preserve.** Turn right on Westhaven Rd. From the uphill end of Helen's Way in this 11 acre Town Nature Preserve, you can walk or bike along a mowed path to several long views of Ithaca College across Inlet Valley.

**5 Sheffield Road.** Turn right uphill on Elm St Extension and Poole Rd and then left on Sheffield Rd. From the heights of West Hill here, you'll see in the distance "hanging deltas" and "truncated spurs," geological landforms left by glaciers ages ago.

**6 Bostwick Road.** Turn left down Bostwick Rd for some fine vistas over farm fields across Inlet Valley to Buttermilk Falls and South Hill, and southward toward higher hills.

**7 Sand Bank Road.** At the bottom of West Hill, turn right on Five Mile Dr (Rte 13A), then left at the light on Rte 13 (which is also Rtes 34 and 96 here), and take your next right on Sandbank Rd. Climb this steep, shoulderless road through Buttermilk Falls State park to emerge for wide long views over Inlet Valley to West Hill. Keep left on Sandbank Rd through woods and open fields with long vistas northward and westward.

**8 Danby Road.** Turn left at the end of Sandbank Rd onto W King Rd, with more long vistas over farm fields. Turn left at the light on Danby Rd, Rte 96B. Look for the scenic overlook pull-off on the left, just before the entrance to Longview retirement community. The spectacular view north from here reaches far to the hills in Lansing, with Cayuga Lake disappearing behind the edge of West Hill. Our second interpretive sign was installed here in 2019.

**9 Pine Tree Road.** Return south back up to the traffic light at King Rd and turn left on E King Rd (see [Bicyclists' Notes](#))\*. At the end of E King, jog right briefly on Coddington Rd, then carefully immediately left down Burns Rd. Burns Rd crosses the scenic Six Mile Creek valley. Turn left on Slaterville Rd, Rte 79, and then right at the blinking light, up Pine Tree Rd. Near the intersection with Snyder Hill Rd and along the walkway north you have a remarkable view over Six Mile Creek Valley to South Hill, and beyond the Inlet Valley to West Hill. Great views in all directions stretch across fields from this pedestrian walkway along Pine Tree Rd, with a dedicated bike lane on the right at the light up Ellis Hollow Rd, and a left down Game Farm Rd on the Town's eastern border.

**10 East Shore Park.** Getting back to the lake through the Town's northeast takes a lot of twists and turns: a left on Dryden Rd, Rte 366, a right at the light on Caldwell by Cornell's Veterinary campus, a right up Warren Rd after the one-lane bridge in Forest Home, a right up Hanshaw, and a left on Sapsucker Woods Rd. A left on Rte 13 (or for bicyclists, straight across to Brown Rd, see notes)\* gets you back down to Cayuga Lake level on a highway with panoramic view of the city and lake shore. Take the exit for Stewart Park at the bottom of the hill, but turn right on Gibbs Dr before the city park entrance and left on E Shore Dr, Rte 34. A half mile north, just past the Cornell Sailing Center marina, turn left over the RR tracks to the Town's East Shore Park, the only public access to Cayuga Lake within the Town of Ithaca. A picnic shelter here, with wonderful views from the shore, stands by our first interpretive sign. We hope that exhibit helps you appreciate the great value of Ithaca's views.

## Bicyclists' Notes

From 8, bicyclists might prefer to cross South Hill through Ithaca College's campus to Coddington Rd, instead of climbing the heights of South Hill above that campus; but the view from E King Rd is worth the trip for those with strong legs.

On the way to 10 from Sapsucker Woods and Rte 13, bicyclists must avoid the section of Rte 13 west of Warren Rd. Cross 13 from Sapsucker to Brown to Warren Rd, or take the recreational trail from behind Langmuir Lab south of the pond across Thornwood Dr, across Warren Rd to Northwoods Dr to a Lansing Village Greenway to a left on Churchill Dr, right on Graham Rd, right on N Triphammer, left on Oakcrest Rd, right on Cayuga Heights Rd, sharp left on E Shore Dr down to E Shore Park.

A slightly modified scenic route, optimized for bicycle touring, covering about 40 miles, with 2,841 feet of occasionally difficult climbing, has been posted online at: [www.mapmyride.com/us/east-ithaca-ny/town-of-ithaca-s-scenic-tour-ride-route-104461851](http://www.mapmyride.com/us/east-ithaca-ny/town-of-ithaca-s-scenic-tour-ride-route-104461851).

## Town of Ithaca Conservation Board

THE TOWN OF ITHACA CONSERVATION BOARD is a group of Town residents working to preserve and protect the Town's natural resources. Our Scenic Resources Committee has inventoried and analyzed scenic views available to the public from Ithaca's Town parks and roads. We've visited and photographed these views to promote greater awareness and appreciation of the beauty of our local landscape, and explored ways to protect it. This map and guide will take you through ten of the best views worth conserving for public enjoyment. Our view sign project won a NYS Association of Conservation Commissions' Environmental Excellence Award for Environmental Projects after the first sign was installed in East Shore Park.

For more information regarding the Conservation Board, please contact:

Town of Ithaca  
215 N. Tioga St.  
Ithaca, NY 14850  
Phone: 607-273-1747

[www.town.ithaca.ny.us/boards/boards/](http://www.town.ithaca.ny.us/boards/boards/)  
[www.facebook.com/IthacaConservationBoard](https://www.facebook.com/IthacaConservationBoard)



July 26, 2022

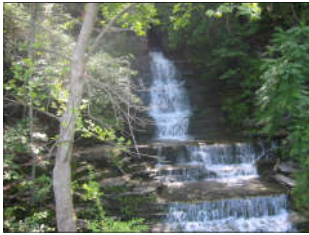


# Town of Ithaca Scenic Views —map and guide—





# Top 10 Scenic Locations



**1 TAUGHANNOCK BLVD** has seven small waterfalls emerging under the Black Diamond Trail along a mile of the road.



**2 TRUMANSBURG RD** shows East Hill rising above Cayuga Lake's valley.



**3 MECKLENBURG RD** descends along a mile of views eastward.



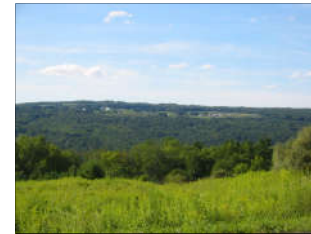
**4 WESTHAVEN PRESERVE** has 11 acres of parkland with occasional stunningly long views through the trees.



**5 SHEFFIELD RD** along the Town's western border peeks through woods far across to East and South Hills.



**6 BOSTWICK RD** comes down 2 miles of huge long views out Inlet Valley along the west edge of South Hill.



**7 SAND BANK RD** loops around more than 2 miles of Inlet Valley panorama, with a short stretch surrounded by forest.



**8 DANBY RD** has a scenic parking pull-off with a long view of Cayuga Lake looking north from the Town's three hills. Our Town's second view sign was placed here with a bench near the north edge of the parking lot.



**9 PINE TREE RD** shows South Hill in the mid-distance, West Hill beyond, as seen from both the road and its walkway. A third view sign is under development for the view from the walkway near Snyder Hill Road.



**10 EAST SHORE PARK** on Cayuga looks way north, west, and south. See our Town's first view sign there.